

Silfab SIL-370 HC Black



Brand: Silfab Solar

Product Code: SIL-370 HC

Availability: In Stock

Weight: 19.50kg

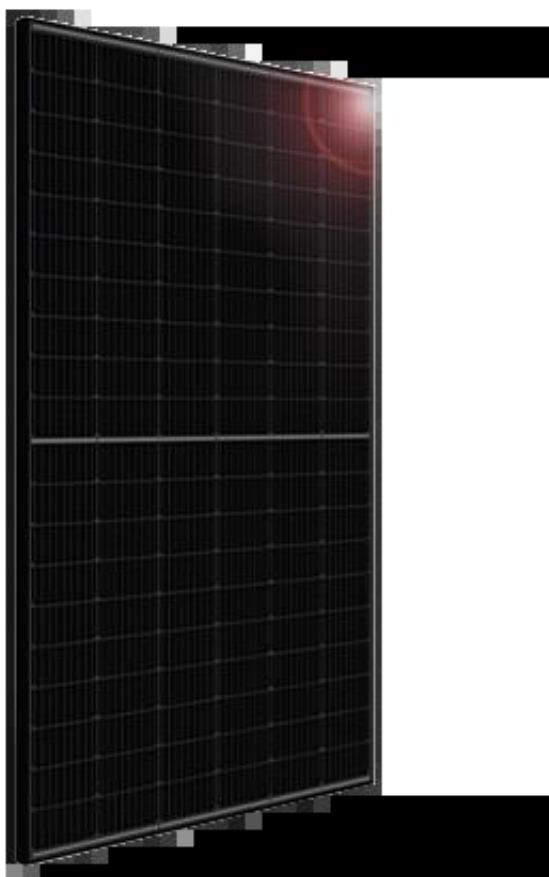
Dimensions: 1,762.00mm x 1,037.00mm x 35.00mm

Price: \$183.88

Ex Tax: \$183.88

Description

Silfab Prime SIL-370 HC by Silfab Solar is a highly efficient solar panel designed to provide reliable and clean energy for residential and commercial applications. With a maximum power output of 370 watts, this panel is capable of generating a significant amount of electricity, making it an excellent choice for large-scale solar projects.



Silfab Solar

- **Power Rating:** 370W
 - Cell Type Monocrystalline
 - Panel Dimensions 1762.0 mm L 1037.0 mm W 35.0 mm D

Solar Panel Aesthetics Black Cell, Black Frame, Black Backsheet
Snow Load 5400 Pa, Wind Load 5400 Pa

- **Linear Warranty Term:** 30 years , Linear
- **Product Warranty Term:** 25 years
- **Made in USA**
- **Approximate cost per watt \$2.95**

PV Product Performance

Power Rating 370W

The SIL-370 HC Black module has a power max output of 370 W. In independent third-party testing, all models test at or above their reported electrical output.

Efficiency 20.2%

The Silfab Prime SIL-370 HC module's efficiency rating is 20.2% - quite high compared to average solar panel efficiency. Silfab's achievement is largely thanks to the 120, Half cells-Si mono 9 bus bar and superior hydrolysis, UV resistance, multi-layer dielectric film, fluorine-free back sheet.

Power Tolerance 0 / +10 watts

Power tolerance refers to the amount of electricity a panel will produce either above or below its rated power capacity at Standard Test Conditions (STC). The smaller the power tolerance deviation or range, the more accurate the rated power capacity is.

Silfab Solar modules have a power tolerance of 0 to +10W. This means Silfab Solar panels will, at the very minimum, be operating at their rated capacity. These panels, however, have exceeded their rated capacity by as much as 10 Ws. For example, a Silfab Solar panel rated at 370 W will be able to operate anywhere from 370 W to 380 W (or +10W higher than originally rated 370) under STC.

With a -0% tolerance rating, the Silfab Prime SIL-370 HC panel operates at, or above 370 W. These performance scores, coupled with Silfab Solar's extremely low rate of material defect, equate to real life performance even in Texas' most demanding operating conditions.

Temperature Coefficient P_{Max} - 0.36 Voc: -0.28

Solar panels perform best at 77°F(25°C). Obviously, Texas temperatures will far exceed 77°F for long portions of the year. A solar panel's temperature coefficient is a measurement indicating how well a specific model of solar panel will perform outside of

ideal operating conditions. Knowing a panel's temperature coefficient and the temperature of the panel will allow you to predict your panel's performance during the dog days of summer.

Temperature coefficients are calculated in Celsius. With each degree above 25°C(77°F) a given solar panel's electric output will be diminished by its temperature coefficients.

Using the above methodology, the Silfab Prime SIL-370 HC panel has a temperature coefficient of -0.36%/°C. When this panel's temperature increases by one degree, from 25°C to 26°C (77° F to 79° F), expect a 0.36% reduction in potential electric output.

When it's August in Texas and temperatures have climbed to 95° F/35° C expect electric output to decrease by 2.8%. When the hottest hours of the summer drive the mercury into the triple digits, say 113° F/ 45° C, the Silfab Prime SIL-370 HC will decrease approximately 7.2%.

Silfab Solar Energy SIL-370 HC Black

Product Name and Model Number	SIL-370 HC
Manufacturer Name and Rating	Silfab Solar
Rated Power Output	370 watt
Efficiency Percentage	20.2%
Power Tolerance	+3.7%
Temperature Coefficient	-0.36%
Resiliency Specs	Snow load 5400Pa, Wind load 5400Pa
Output Warranty Term Length	25 year
Output Warranty Decline Rate	-0.58%
Materials Warranty Term Length	12 years
Cell Color(s)	Black
Frame	Black Anodized Aluminum Alloy
Backsheet Color(s)	Black
Cell Type (e.g. monocrystalline)	Monocrystalline PERC
Panel Dimensions	1762 X 1037 X 30mm
Weight	43. lbs/ 19.5 kg
Number of Cells	120 Half Cells
Connector Type	MC4
Manufacturer Location	USA, Canada
Certifications Received (UL, IEC, ISO)	IEC, CE UL, Fraunhofer, PVEL

Average Cost per Watt	.70
Marketplace Average Pricing	.90 - 1.50

Warranty Specifications

Warranty Specifications

SilfabSolar panels offers a 30-year, Linear power performance guarantee

- 97.1% end 1st yr,
- 91.6% end 12th yr,
- 85.1% end 25th yr,
- and 82.6% end 30th yr

Silfab has a 12/25-year module product workmanship warranty on every panel they manufacture.

This warranty guarantees all solar panels to be defect free and with normal use and proper installation are being covered for 12 years from date of purchase. After installation, Silfab encourages homeowners to visit their website and register their panels online. This online registration extends your product warranty from 12 to 25 years.

Specification

Solar Panel Configuration	
Cell Type	Monocrystalline
Panel Aesthetics	Black Cell, Black Frame, Black Backsheet
Panel Dimensions	1762.0 mm L 1037.0 mm W 35.0 mm D
Power Rating	370W
Snow load	5400 Pa
Wind Load	5400 Pa
Solar Panel Warranty	
Linear Production	30 Years

Warranty Term	
Product Warranty Term	25 Years
PV Product Performance	
Efficiency	20.2%
Power Tolerance	0 / +10 Watts
Temperature Coefficient	PMax - 0.36 Voc: -0.28
Others	
Average Cost / Watt	\$2.95
Where it's Made	Made in USA